



Parts catalogue for Table Spot Welder

ver. 1.03



KOYO GIKEN INC.

2-7-6 Hashimotodai Midori-ku Sagami-hara Kanagawa 252-0132

Tel: +81(0) 427-770-4306 Fax: +81(0)427-770-4310

E-MAIL : info-hp@koyogiken.co.jp

URL : www.koyogiken.co.jp

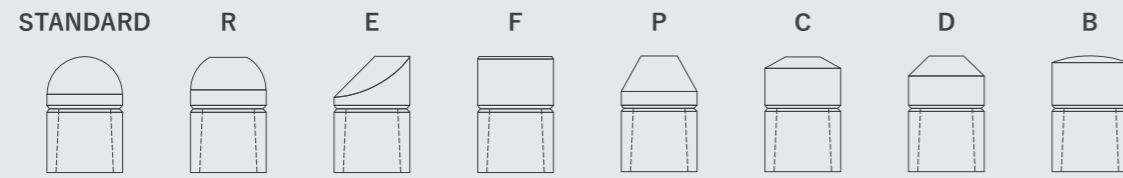
CONTENTS

CAP TIP	4
CAP TIP (SPECIAL TYPE)	12
OFFSET TIP (SPECIAL TYPE)	14
SHANK	15
SHANK HOLDER	18
SPECIAL SHANK	20
CARTRIDGE SHANK AND TIP FOR SCREWS	22
TIP FOR WELD NUT	24
SWIVEL TIP	25
PARTS FOR ANTI-OXIDATION SYSTEM	26
ACCESSORIES	27
SIMPLIFIED TENSILE TESTER	31

SCREW, NUT AND PROJECTION WELDING BY MYSPOT

Screw and nut welding by V-gun	32
Nut/Projection welding by H-gun	33

TYPE



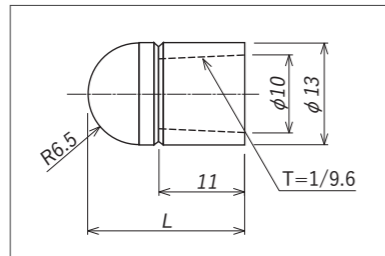
MATERIAL CrCu

So-called chrome copper, precipitation hardening alloy of Cu-Cr. Excellent in strength, heat resistance and conductivity as well as workability in welding. Most commonly used.

Al₂O₃Cu

Sintered metal of aluminum dispersion copper. Shows its power in welding of galvanizing steel sheet such as zinc. Used to the spot welding of high tensile steel or base metal with surface treatment such as bonderizing (galvannealed) steel plate, galvanized steel plate, etc.

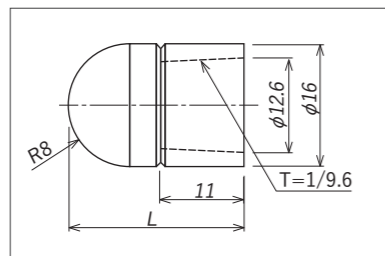
STANDARD TYPE $\phi 13$ (6.5R)



Standard type cap tip for MYSPO
Minimum order / 20 pcs

PRODUCT	DESCRIPTION	CODE NO.
13×6.5RA	L=20 CrCu	CPTP-S-131320RA (K161-01-001)
13×6.5RB	L=20 Al ₂ O ₃ Cu	CPTP-S-131320RB (K161-01-002)

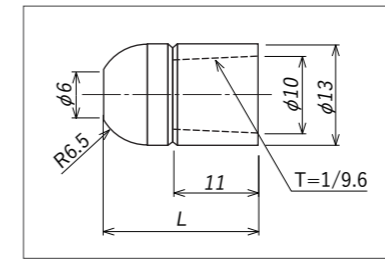
STANDARD TYPE $\phi 16$ (8R)



Standard type cap tip for MYSPO
Minimum order / 20 pcs

PRODUCT	DESCRIPTION	CODE NO.
16×8RA	L=23 CrCu	CPTP-S-161623RA (K161-01-007)
16×8RB	L=23 Al ₂ O ₃ Cu	CPTP-S-161623RB (K161-01-008)

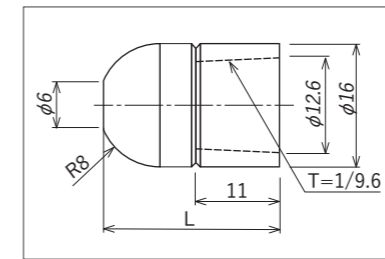
R TYPE $\phi 13$ FLAT TOP $\phi 6$



Minimum order / 20 pcs

PRODUCT	DESCRIPTION	CODE NO.
R-13×6A	L=20 CrCu	CPTP-R-131320-A (K161-02-001)
R-13×6B	L=20 Al ₂ O ₃ Cu	CPTP-R-131320-B (K161-02-002)

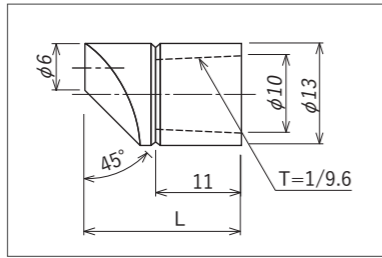
R TYPE $\phi 16$ FLAT TOP $\phi 6$



Minimum order / 20 pcs

PRODUCT	DESCRIPTION	CODE NO.
R-16×6A	L=23 CrCu	CPTP-R-161623-A (K161-02-007)
R-16×6B	L=23 Al ₂ O ₃ Cu	CPTP-R-161623-B (K161-02-008)

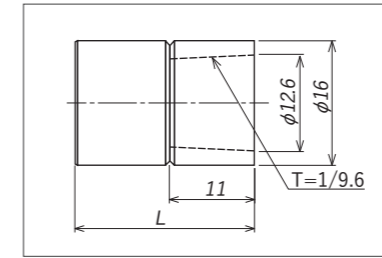
E TYPE $\phi 13$ FLAT TOP $\phi 6$



Minimum order / 20 pcs

PRODUCT	DESCRIPTION	CODE NO.
E-13 \times 6A	L=20 CrCu	CPTP-E-131320-A (K161-03-001)
E-13 \times 6B	L=20 Al ₂ O ₃ Cu	CPTP-E-131320-B (K161-03-002)

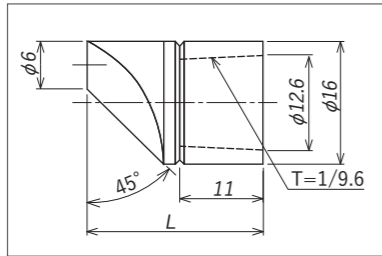
F TYPE $\phi 16$



Minimum order / 20 pcs

PRODUCT	DESCRIPTION	CODE NO.
F-16A	L=23 CrCu	CPTP-F-161623-A (K161-04-007)
F-16B	L=23 Al ₂ O ₃ Cu	CPTP-F-161623-B (K161-04-008)

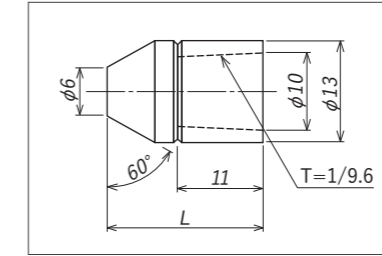
E TYPE $\phi 16$ FLAT TOP $\phi 6$



Minimum order / 20 pcs

PRODUCT	DESCRIPTION	CODE NO.
E-16 \times 6A	L=23 CrCu	CPTP-E-161623-A (K161-03-007)
E-16 \times 6B	L=23 Al ₂ O ₃ Cu	CPTP-E-161623-B (K161-03-008)

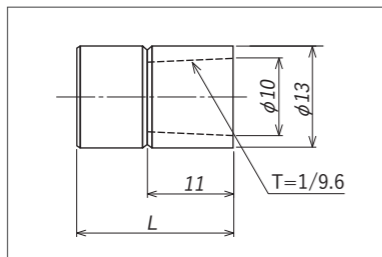
P TYPE $\phi 13$ FLAT TOP $\phi 6$



Minimum order / 20 pcs

PRODUCT	DESCRIPTION	CODE NO.
P-13 \times 6A	L=20 CrCu	CPTP-P-131320-A (K161-05-001)
P-13 \times 6B	L=20 Al ₂ O ₃ Cu	CPTP-P-131320-B (K161-05-002)

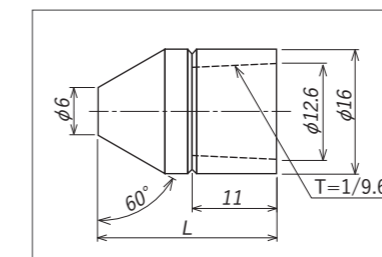
F TYPE $\phi 13$



Minimum order / 20 pcs

PRODUCT	DESCRIPTION	CODE NO.
F-13A	L=20 CrCu	CPTP-F-131320-A (K161-04-001)
F-13B	L=20 Al ₂ O ₃ Cu	CPTP-F-131320-B (K161-04-002)

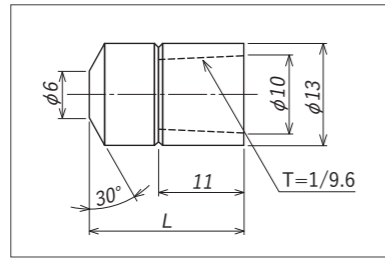
P TYPE $\phi 16$ FLAT TOP $\phi 6$



Minimum order / 20 pcs

PRODUCT	DESCRIPTION	CODE NO.
P-16 \times 6A	L=23 CrCu	CPTP-P-161623-A (K161-05-007)
P-16 \times 6B	L=23 Al ₂ O ₃ Cu	CPTP-P-161623-B (K161-05-008)

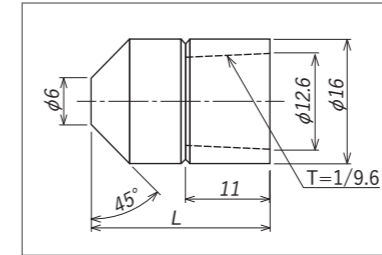
C TYPE $\phi 13$ FLAT TOP $\phi 6$



Minimum order / 20 pcs

PRODUCT	DESCRIPTION	CODE NO.
C-13×6A	L=20 CrCu	CPTP-C-131320-A (K161-06-001)
C-13×6B	L=20 Al ₂ O ₃ Cu	CPTP-C-131320-B (K161-06-002)

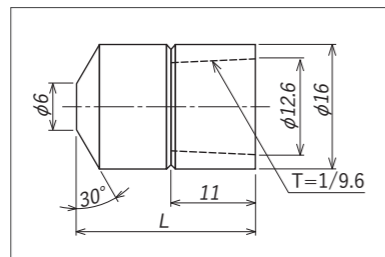
D TYPE $\phi 16$ FLAT TOP $\phi 6$



Minimum order / 20 pcs

PRODUCT	DESCRIPTION	CODE NO.
D-16×6A	L=23 CrCu	CPTP-D-161623-A (K161-07-007)
D-16×6B	L=23 Al ₂ O ₃ Cu	CPTP-D-161623-B (K161-07-008)

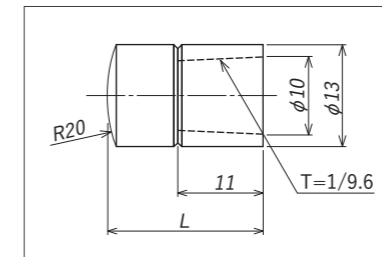
C TYPE $\phi 16$ FLAT TOP $\phi 6$



Minimum order / 20 pcs

PRODUCT	DESCRIPTION	CODE NO.
C-16×6A	L=23 CrCu	CPTP-C-161623-A (K161-06-007)
C-16×6B	L=23 Al ₂ O ₃ Cu	CPTP-C-161623-B (K161-06-008)

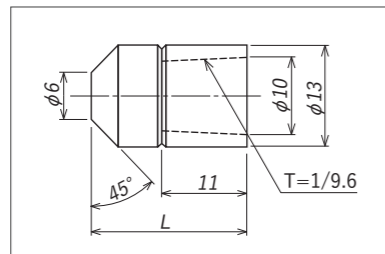
B TYPE $\phi 13$ 20R



Minimum order / 20 pcs

PRODUCT	DESCRIPTION	CODE NO.	PRICE (JPN YEN)
B-13×20RA	L=20 CrCu	CPTP-B-131320RA (K161-08-001)	
B-13×20RB	L=20 Al ₂ O ₃ Cu	CPTP-B-131320RB (K161-08-002)	

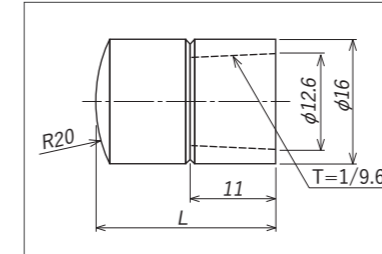
D TYPE $\phi 13$ FLAT TOP $\phi 6$



Minimum order / 20 pcs

PRODUCT	DESCRIPTION	CODE NO.
D-13×6A	L=20 CrCu	CPTP-D-131320-A (K161-07-001)
D-13×6B	L=20 Al ₂ O ₃ Cu	CPTP-D-131320-B (K161-07-002)

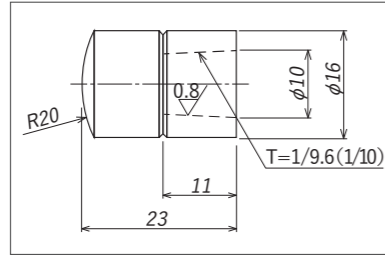
B TYPE $\phi 16$ 20R



Minimum order / 20 pcs

PRODUCT	DESCRIPTION	CODE NO.
B-16×20RA	L=23 CrCu	CPTP-B-161623RA (K161-08-003)
B-16×20RB	L=23 Al ₂ O ₃ Cu	CPTP-B-161623RB (K161-08-004)

B TYPE (SPECIAL) 20R

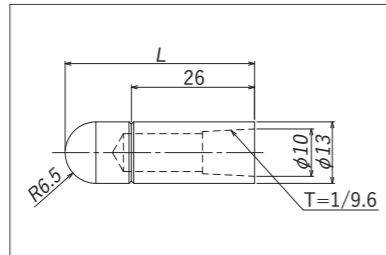


$\phi 16$ cap tip that can be directly attached to a $\phi 13$ shank
Only by replacing the cap tip, spot welding of large size weld nuts and thick plates is possible.

Minimum order / 20 pcs

PRODUCT	DESCRIPTION	CODE NO.
B-16-13×20RA	$\phi 16 \times \phi 13 \times 20R$ L=23 CrCu	CPTP-BS161323RA (K161-11-001)

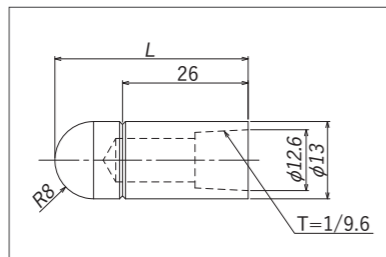
$\phi 13$ CAP TIP (SPECIAL TYPE)



For Anti-oxidation system (For $\phi 13$)

PRODUCT	DESCRIPTION	CODE NO.
13×6.5R×40	$\phi 13 \times \phi 6.5R$ L=40 CrCu	SPCT-SP131340RA (K180-01-003)
13×6.5R×30	$\phi 13 \times \phi 6.5R$ L=30 CrCu	SPCT-SP131330RA (K180-01-022)

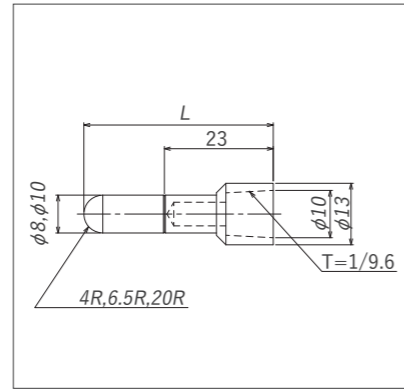
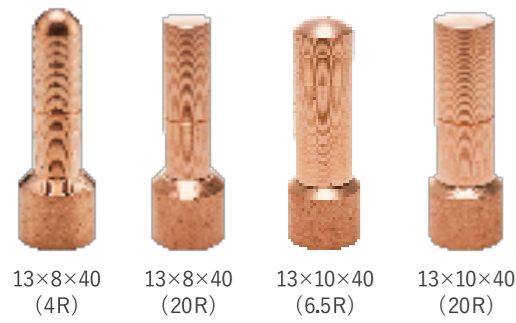
$\phi 16$ CAP TIP (SPECIAL TYPE)



For Anti-oxidation system (For $\phi 16$)

PRODUCT	DESCRIPTION	CODE NO.
16×8R×40	$\phi 16 \times \phi 8R$ L=40 CrCu	SPCT-SP161640RA (K180-01-004)

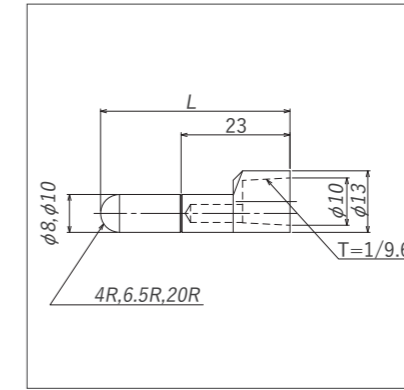
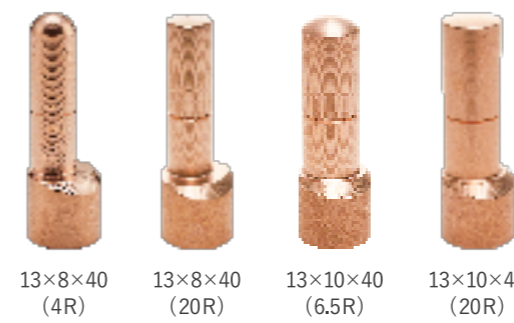
φ13 CAP TIP (4R,6.5R,20R/φ8,φ10)



For Anti-oxidation system
For MYSLOT without a table lift, a combination of the cap tip (13 x 8 x 40) and the 50 mm shank is recommended.

PRODUCT	DESCRIPTION	CODE NO.
13×8×40 (4R)	φ13xφ8(4R) L=40 CrCu	SPCT-SP130840RA (K180-01-001)
13×8×30 (4R)	φ13xφ8(4R) L=30 CrCu	SPCT-SP130830RA (K180-01-011)
NEW 13×8×40 (20R)	φ13xφ8(20R) L=40 CrCu	SPCT-SP130840SA (K180-01-050)
NEW 13×8×30 (20R)	φ13xφ8(20R) L=30 CrCu	SPCT-SP130830SA
NEW 13×10×40 (6.5R)	φ13xφ10(6.5R) L=40 CrCu	SPCT-SP131040RA
NEW 13×10×30 (6.5R)	φ13xφ10(6.5R) L=30 CrCu	SPCT-SP131030RA
NEW 13×10×40 (20R)	φ13xφ10(20R) L=40 CrCu	SPCT-SP131040SA (K180-01-055_R00)
NEW 13×10×30 (20R)	φ13xφ10(20R) L=30 CrCu	SPCT-SP131030SA

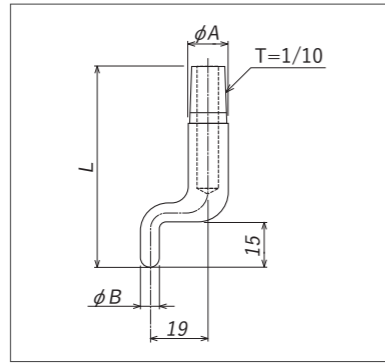
φ13 OFFSET CAP TIP (4R,6.5R,20R/φ8,φ10)



For Anti-oxidation system
For MYSLOT without a table lift, a combination of the cap tip (13 x 8 x 40) and the 50 mm shank is recommended.

PRODUCT	DESCRIPTION	CODE NO.
13×8×40 (4R)	φ13xφ8(4R) L=40 CrCu	SPCT-OF130840RA (K180-01-002)
13×8×30 (4R)	φ13xφ8(4R) L=30 CrCu	SPCT-OF130830RA (K180-01-010)
NEW 13×8×40 (20R)	φ13xφ8(20R) L=40 CrCu	SPCT-OF130840SA (K180-01-051)
NEW 13×8×30 (20R)	φ13xφ8(20R) L=30 CrCu	SPCT-OF130830SA
NEW 13×10×40 (6.5R)	φ13xφ10(6.5R) L=40 CrCu	SPCT-OF1310406A (K180-01-056_R00)
NEW 13×10×30 (6.5R)	φ13xφ10(6.5R) L=30 CrCu	SPCT-OF1310306A
NEW 13×10×40 (20R)	φ13xφ10(20R) L=40 CrCu	SPCT-OF131040SA (K180-01-054_R00)
NEW 13×10×30 (20R)	φ13xφ10(20R) L=30 CrCu	SPCT-OF131030SA

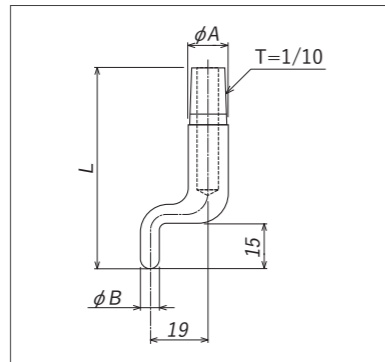
φ13 OFFSET TIP (SPECIAL TYPE) TIP φ6, φ8



φA × φB × Lmm

PRODUCT	DESCRIPTION	CODE NO.
13×6×66 1/10	φ13xφ6(R3) L=66 1/10 CrCu	SPOT-1306066STA (K161-10-003)
13×8×66 1/10	φ13xφ8(R4) L=66 1/10 CrCu	SPOT-1308066STA (K161-10-004)

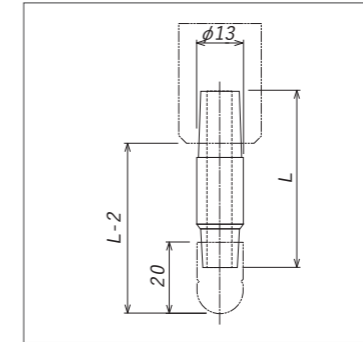
φ16 OFFSET TIP (SPECIAL TYPE) TIP φ6



φA × φB × Lmm

PRODUCT	DESCRIPTION	CODE NO.
16×6×66 1/10	φ16xφ6(R3) L=66 1/10 CrCu	SPOT-1606066STA (K161-10-011)

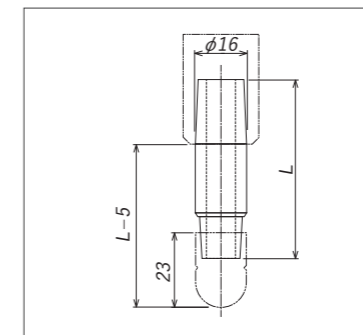
φ13 STRAIGHT SHANK



φ13 × Lmm (1/10)

PRODUCT	DESCRIPTION	CODE NO.
13×40 1/10	φ13 L=40 1/10 CrCu	STSK-13L040-STA (K160-03-014)
13×50 1/10	φ13 L=50 1/10 CrCu	STSK-13L050-STA (K160-03-002)
13×65 1/10	φ13 L=65 1/10 CrCu	STSK-13L065-STA (K160-03-016)
13×70 1/10	φ13 L=70 1/10 CrCu	STSK-13L070-STA (K160-03-006)
13×80 1/10	φ13 L=80 1/10 CrCu	STSK-13L080-STA (K160-03-008)
13×100 1/10	φ13 L=100 1/10 CrCu	STSK-13L100-STA (K160-03-012)

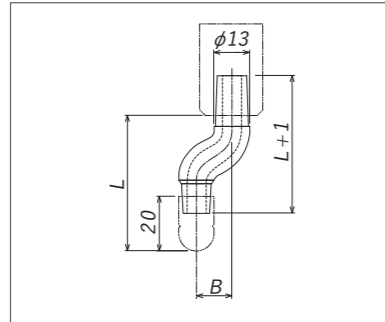
φ16 STRAIGHT SHANK



φ16 × Lmm (1/10)

PRODUCT	DESCRIPTION	CODE NO.
16×40 1/10	φ16 L=40 1/10 CrCu	STSK-16L040-STA (K160-04-022)
16×50 1/10	φ16 L=50 1/10 CrCu	STSK-16L050-STA (K160-04-002)
16×65 1/10	φ16 L=65 1/10 CrCu	STSK-16L065-STA (K160-04-024)
16×70 1/10	φ16 L=70 1/10 CrCu	STSK-16L070-STA (K160-04-006)
16×100 1/10	φ16 L=100 1/10 CrCu	STSK-16L100-STA (K160-04-012)
16×160 1/10	φ16 L=160 1/10 CrCu	STSK-16L160-STA (K160-04-020)

φ13 OFFSET SHANK

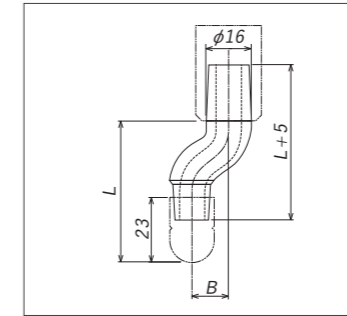
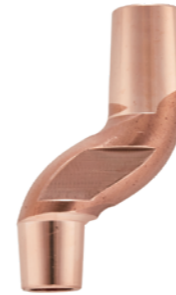


φ13×Lmm×OFFSET Bmm (1/10)

For the 29 mm offset model, the maximum pressure is 2.2 kN.

PRODUCT	DESCRIPTION	CODE NO.
13×40×6 1/10	φ13 L=40 OF=6 1/10 CrCu	OFSK-13L04006SA (K160-01-028)
13×50×6 1/10	φ13 L=50 OF=6 1/10 CrCu	OFSK-13L05006SA (K160-01-002)
13×50×13 1/10	φ13 L=50 OF=13 1/10 CrCu	OFSK-13L05013SA (K160-01-004)
13×50×19 1/10	φ13 L=50 OF=19 1/10 CrCu	OFSK-13L05019SA (K160-01-006)
13×50×29 1/10	φ13 L=50 OF=29 1/10 CrCu	OFSK-13L05029SA (K160-01-008)
13×65×6 1/10	φ13 L=65 OF=6 1/10 CrCu	OFSK-13L06506SA (K160-01-032)
13×65×13 1/10	φ13 L=65 OF=13 1/10 CrCu	OFSK-13L06513SA (K160-01-034)
13×65×19 1/10	φ13 L=65 OF=19 1/10 CrCu	OFSK-13L06519SA (K160-01-036)
13×65×29 1/10	φ13 L=65 OF=29 1/10 CrCu	OFSK-13L06529SA (K160-01-038)
13×80×6 1/10	φ13 L=80 OF=6 1/10 CrCu	OFSK-13L08006SA (K160-01-016)
13×80×13 1/10	φ13 L=80 OF=13 1/10 CrCu	OFSK-13L08013SA (K160-01-018)
13×80×19 1/10	φ13 L=80 OF=19 1/10 CrCu	OFSK-13L08019SA (K160-01-020)

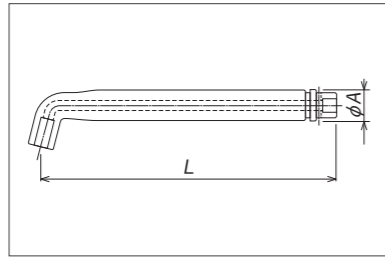
φ16 OFFSET SHANK



φ16 ×Lmm×OFFSET Bmm (1/10)

PRODUCT	DESCRIPTION	CODE NO.
16×40×6 1/10	φ16 L=40 OF=6 1/10 CrCu	OFSK-16L04006SA (K160-02-026)
16×50×6 1/10	φ16 L=50 OF=6 1/10 CrCu	OFSK-16L05006SA (K160-02-002)
16×50×13 1/10	φ16 L=50 OF=13 1/10 CrCu	OFSK-16L05013SA (K160-02-004)
16×50×19 1/10	φ16 L=50 OF=19 1/10 CrCu	OFSK-16L05019SA (K160-02-006)
16×65×13 1/10	φ16 L=65 OF=13 1/10 CrCu	OFSK-16L06513SA (K160-02-030)
16×65×19 1/10	φ16 L=65 OF=19 1/10 CrCu	OFSK-16L06519SA (K160-02-032)
16×80×13 1/10	φ16 L=80 OF=13 1/10 CrCu	OFSK-16L08013SA (K160-02-016)
16×80×19 1/10	φ16 L=80 OF=19 1/10 CrCu	OFSK-16L08019SA (K160-02-018)
16×100×13 1/10	φ16 L=100 OF=13 1/10 CrCu	OFSK-16L10013SA (K160-02-022)

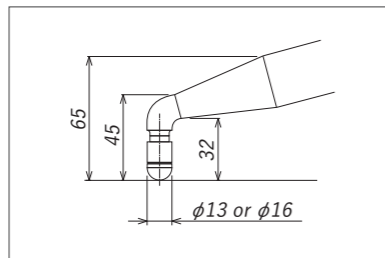
H SHANK HOLDER



$\phi 28 \times L$ mm
With Teflon tube and tube fixing piece

PRODUCT	DESCRIPTION	CODE NO.
H SHANK HOLDER $\phi 13$ 1/10	Standard 21H 28×320 1/10 CrCu	HSKH-13-21H-STA (K071-01-002)
H SHANK HOLDER $\phi 16$ 1/10	Standard 21H 28×320 1/10 CrCu	HSKH-16-21H-STA (K071-01-004)
H SHANK HOLDER $\phi 13$ 1/10	Standard 03H 28×217 1/10 CrCu	HSKH-13-03H-STA (K071-01-006)
H SHANK HOLDER $\phi 16$ 1/10	Standard 03H 28×217 1/10 CrCu	HSKH-16-03H-STA (K071-01-008)
LONG TYPE H SHANK HOLDER $\phi 13$ 1/10	Long type 28×450 1/10 CrCu	HSKH-13-LNG-STA (K071-01-022)
LONG TYPE H SHANK HOLDER $\phi 16$ 1/10	Long type 28×450 1/10 CrCu	HSKH-16-LNG-STA (K071-01-024)

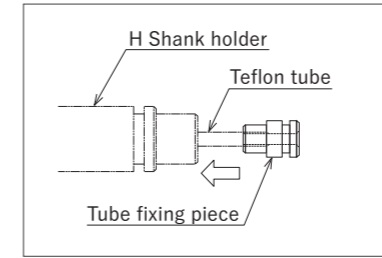
H SHANK HOLDER (SPECIAL TYPE)



*For direct attachment of a cap tip
With Teflon tube and tube fixing piece

PRODUCT	DESCRIPTION	CODE NO.
H SHANK HOLDER (SPECIAL TYPE) $\phi 13$ 1/10	For $\phi 13$ cap tip 28×335.7 1/10 CrCu	HSKH-13-SP3-STA (K071-01-013)
H SHANK HOLDER (SPECIAL TYPE) $\phi 16$ 1/10	For $\phi 16$ cap tip 28×335.7 1/10 CrCu	HSKH-16-SP3-STA (K071-01-014)

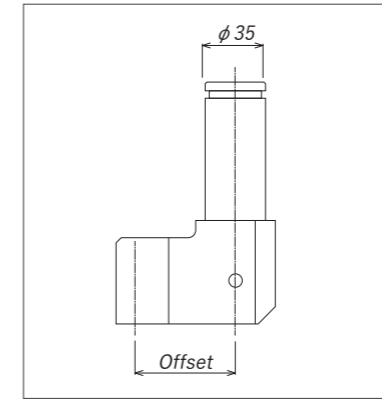
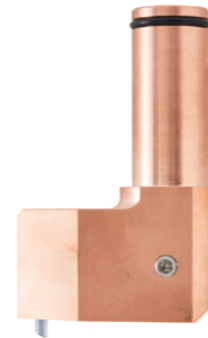
TUBE FIXING PIECE FOR SHANK HOLDER



Used in combination with the MYSPO T H shank holder.
(You do not need to order it, because it is included with the shank holder you purchased.)

PRODUCT	DESCRIPTION	CODE NO.
TUBE FIXING PIECE FOR SHANK HOLDER	Common part for 28 mm shank holders	HSKH-TUFIX-F28A (K071-02-001)

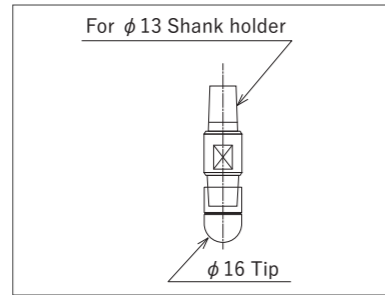
V SHANK HOLDER



Shank holder for MYSPO T V-guns
When purchasing a V shank holder, let us know the model and serial numbers.

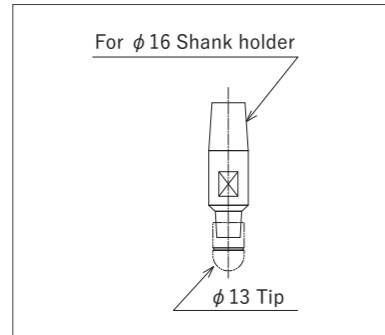
PRODUCT	DESCRIPTION	CODE NO.
V SHANK HOLDER $\phi 13$ 1/10	Standard Offset=58 $\phi 13$ -1/10 CrCu	VSKH-13-F58-STA (K081-01-002)
V SHANK HOLDER $\phi 16$ 1/10	Standard Offset=58 $\phi 16$ -1/10 CrCu	VSKH-16-F58-STA (K081-01-004)

SPECIAL STRAIGHT SHANK



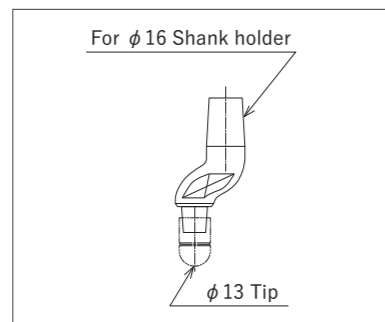
PRODUCT	DESCRIPTION	CODE NO.
13-16×50 1/10	φ13-φ16 L=50 1/10 CrCu	SPSS-1316050-SA (K160-06-002)

SPECIAL STRAIGHT SHANK



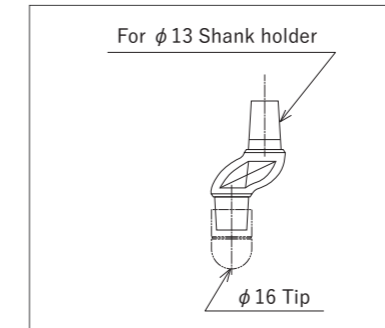
PRODUCT	DESCRIPTION	CODE NO.
16-13×50 1/10	φ16-φ13 L=50 1/10 CrCu	SPSS-1613050-SA (K160-05-002)

SPECIAL OFFSET SHANK



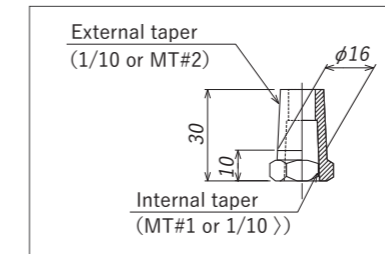
PRODUCT	DESCRIPTION	CODE NO.
16-13×45×13 1/10	φ16-φ13 L=45 OF=13 1/10 CrCu	SPOS-16134513SA (K160-07-006)
16-13×50×13 1/10	φ16-φ13 L=50 OF=13 1/10 CrCu	SPOS-16135013SA (K160-07-002)

SPECIAL OFFSET SHANK



PRODUCT	DESCRIPTION	CODE NO.
13-16×50×13 1/10	φ13-φ16 L=50 OF=13 1/10 CrCu	SPOS-13165013SA (K160-08-002)

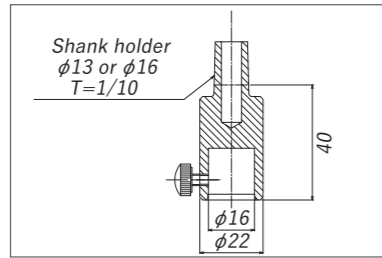
TAPER ADAPTER



For shank holder φ16, For cap tip φ13

PRODUCT	DESCRIPTION	CODE NO.
φ16-φ13 1/10-1/10	BSBM	SPTA-16ST13ST-C (K160-98-005)
φ16-φ13 1/10-MT	BSBM	SPTA-16ST13MT-C (K160-98-007)
φ16-φ13 MT-1/10	BSBM	SPTA-16MT13ST-C (K160-98-008)

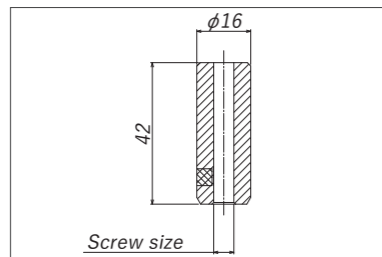
CARTRIDGE SHANK



Electric resistance welding causes neither damage to the threads nor spatters.
This shank should be used with V-gun.

PRODUCT	DESCRIPTION	CODE NO.
CARTRIDGE SHANK ASSY $\phi 13$ -1/10	$\phi 13$ 1/10 CrCu	CTAS-SHK-13-STA (K162-07-004)
CARTRIDGE SHANK ASSY $\phi 16$ -1/10	$\phi 16$ 1/10 CrCu	CTAS-SHK-16-STA (K162-07-002)

CARTRIDGE TIP FOR SCREWS

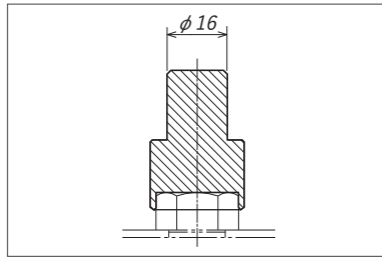


Used in combination with a cartridge shank.
With screw fall prevention function

Needing weld screws? Please contact us.

PRODUCT	DESCRIPTION	CODE NO.
TIP FOR M3 EXTERNAL SCREW(For Fe)	$\phi 3$ CrCu	CRTP-WSFS-M03-A (K162-06-002)
TIP FOR M4 EXTERNAL SCREW(For Fe)	$\phi 4$ CrCu	CRTP-WSFS-M04-A (K162-06-003)
TIP FOR M5 EXTERNAL SCREW(For Fe)	$\phi 5$ CrCu	CRTP-WSFS-M05-A (K162-06-004)
TIP FOR M6 EXTERNAL SCREW, M3 AND M4 INTERNAL SCREW(For Fe)	$\phi 6$ CrCu	CRTP-WSFS-M06-A (K162-06-005)
TIP FOR M8 EXTERNAL SCREW, M5 INTERNAL SCREW(For Fe)	$\phi 8$ CrCu	CRTP-WSFS-M08-A (K162-06-006)
TIP FOR M10 EXTERNAL SCREW, M6 INTERNAL SCREW(For Fe)	$\phi 10$ CrCu	CRTP-WSFS-M10-A (K162-06-007)
TIP FOR M3 EXTERNAL SCREW(For SUS and Fe)	$\phi 3$ CrCu	CTAS-WSFS-M03SA (K162-06-008)
TIP FOR M4 EXTERNAL SCREW(For SUS and Fe)	$\phi 4$ CrCu	CTAS-WSFS-M04SA (K162-06-009)
TIP FOR M5 EXTERNAL SCREW(For SUS and Fe)	$\phi 5$ CrCu	CTAS-WSFS-M05SA (K162-06-010)
TIP FOR M6 EXTERNAL SCREW, M3 AND M4 INTERNAL SCREW(For SUS and Fe)	$\phi 6$ CrCu	CTAS-WSFS-M06SA (K162-06-011)
TIP FOR M8 EXTERNAL SCREW, M5 INTERNAL SCREW(For SUS and Fe)	$\phi 8$ CrCu	CTAS-WSFS-M08SA (K162-06-012)
TIP FOR M10 EXTERNAL SCREW, M6 INTERNAL SCREW(For SUS and Fe)	$\phi 10$ CrCu	CTAS-WSFS-M10SA (K162-06-013)

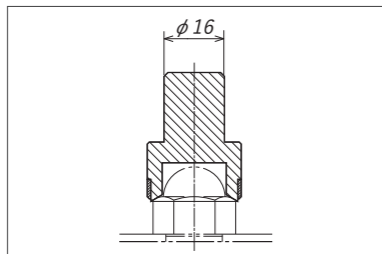
TIP FOR HEXAGON WELD NUT



Used in combination with a cartridge shank.

PRODUCT	DESCRIPTION	CODE NO.
TIP FOR HEXAGON WELD NUT FOR M4,M5	CrCu	CRTP-HXWN-M05-A (K162-08-005)
TIP FOR HEXAGON WELD NUT FOR M6	CrCu	CRTP-HXWN-M06-A (K162-08-004)
TIP FOR HEXAGON WELD NUT FOR M8	CrCu	CRTP-HXWN-M08-A (K162-08-003)
TIP FOR HEXAGON WELD NUT FOR M10	CrCu	CRTP-HXWN-M10-A (K162-08-002)
TIP FOR HEXAGON WELD NUT FOR M12	CrCu	CRTP-HXWN-M12-A (K162-08-001)

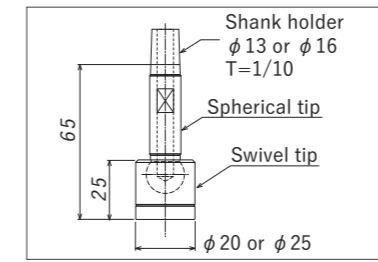
TIP FOR DOMED CAP NUT



Used in combination with a cartridge shank.

PRODUCT	DESCRIPTION	CODE NO.
TIP FOR DOMED CAP NUT FOR M4,M5	$\phi 8.2 \pm 0.05$ L=6.2 CrCu	CRTP-CPWN-M05-A (K162-09-005)
TIP FOR DOMED CAP NUT FOR M6	$\phi 10.5 \pm 0.05$ L=8 CrCu	CRTP-CPWN-M06-A (K162-09-004)
TIP FOR DOMED CAP NUT FOR M8	$\phi 13 \pm 0.05$ L=8.8 CrCu	CRTP-CPWN-M08-A (K162-09-003)
TIP FOR DOMED CAP NUT FOR M10	$\phi 15 \pm 0.05$ L=10.7 CrCu	CRTP-CPWN-M10-A (K162-09-002)
TIP FOR DOMED CAP NUT FOR M12	$\phi 17 \pm 0.05$ L=10.2 CrCu	CRTP-CPWN-M12-A (K162-09-001)

SPHERICAL TIP / SWIVEL TIP



The best electrode for projection spot welding.
They are used in combination.

PRODUCT	DESCRIPTION	CODE NO.
SPHERICAL TIP- $\phi 16$ FOR $\phi 25$ SWIVEL TIP	1/10 CrCu	SWTP-SHK1625STA (K163-01-001)
SPHERICAL TIP- $\phi 13$ FOR $\phi 25$ SWIVEL TIP	1/10 CrCu	SWTP-SHK1325STA (K163-01-002)
SPHERICAL TIP- $\phi 16$ FOR $\phi 20$ SWIVEL TIP	1/10 CrCu	SWTP-SHK1620STA (K163-01-003)
SPHERICAL TIP- $\phi 13$ FOR $\phi 20$ SWIVEL TIP	1/10 CrCu	SWTP-SHK1320STA (K163-01-004)
SWIVEL TIP- $\phi 25$	With P-15 O-ring CrCu	SWTP-TIP-2515-A (K163-02-001)
SWIVEL TIP- $\phi 20$	With P-12 O-ring CrCu	SWTP-TIP-2012-A (K163-02-002)

ANTI-OXIDATION SYSTEM

Argon gas protects the product during spot welding.

Even if stainless steel is spot welded, no burn marks are left.

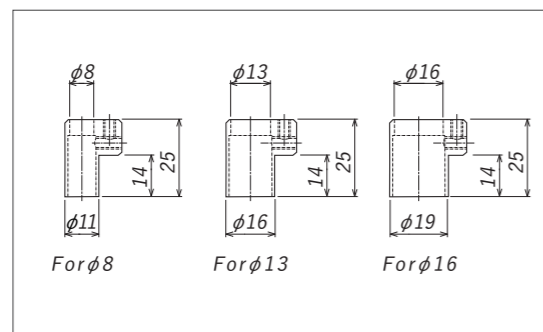
The removal of burn marks after spot welding can be reduced.

When purchasing this system, let us know the model and serial numbers of your spot welder.

*Normal operation cannot be guaranteed if it is used with a stationary spot welder that is not manufactured by KOYOGIKEN.

PRODUCT	DESCRIPTION	CODE NO.
MYSLOT (H-GUN)	φ8 For 21 lower cable	AOSY-0821HL0001 (K180-00-005)
	φ8 For 21 upper cable	AOSY-0821HU0001 (K180-00-007)
	φ8 For 03H	AOSY-0803H-0001 (K180-00-009)
MYSLOT (V-GUN)	φ8 For 21V	AOSY-0821V-0001 (K180-00-011)
	φ8 For 03V	AOSY-0803V-0001 (K180-00-013)
MYSLOT (HV GUN)	φ8 For 21HV	AOSY-0821HV0001 (K180-00-001)
	φ8 For 03HV	AOSY-0803HV0001 (K180-00-003)
CONVENTIONAL TYPE SPOT WELDER	φ8 (NK-08)	AOSY-0808P-0001 (K180-00-019)
	φ13 (NK-08)	AOSY-1308P-0001 (K180-00-019)
	φ16 (NK-08)	AOSY-1608P-0001 (K180-00-019)

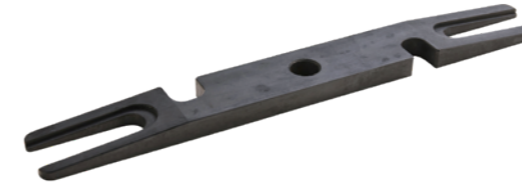
COVER FOR ANTI-OXIDATION SYSTEM



PRODUCT	DESCRIPTION	CODE NO.
COVER FOR ANTI-OXIDATION SYSTEM φ8	ASSY φ8	AOCV-F08-000001 (K180-02-001)
COVER FOR ANTI-OXIDATION SYSTEM φ13	ASSY φ13	AOCV-F13-000001 (K180-02-002)
COVER FOR ANTI-OXIDATION SYSTEM φ16	ASSY φ16	AOCV-F16-000001 (K180-02-003)

TIP REMOVER

Allows for easy and fast tip replacement. Reduces shank taper damage.



PRODUCT	DESCRIPTION	CODE NO.
TIP REMOVER	For φ13, φ16	TPRM-0000000001 (K900-02-003)

TEFLON TUBE

Cooling tube in the shank.



PRODUCT	DESCRIPTION	CODE NO.
TEFLON TUBE φ4	Internal φ3-External φ4	TUZZ-0000000001 (K900-05-001)
TEFLON TUBE φ6	Internal φ4-External φ6	TUAO-0000000002 (K900-05-002)

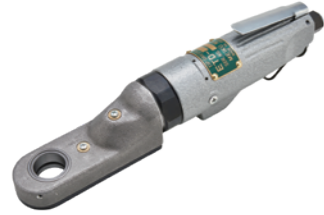
ELECTRICAL CONDUCTIVE GREASE

Prevents the electrode taper from sticking and reduces damage during tip replacement.



PRODUCT	DESCRIPTION	CODE NO.
ELECTRICAL CONDUCTIVE GREASE	Approx.50g	ELGR-CASE-00003

TIP DRESSER



Ideal for dressing spot welding tips.
(with cutter case and hose)

PRODUCT	DESCRIPTION	CODE NO.
TIP DRESSER ASSY $\phi 13$	With $\phi 13$ case and hose	TPDR-F13-000001 (K910-01-001)
TIP DRESSER ASSY $\phi 16$	With $\phi 16$ case and hose	TPDR-F16-000001 (K910-01-001)

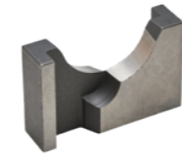
CUTTER CASE



Select the case compatible with the tip to be dressed.

PRODUCT	DESCRIPTION	CODE NO.
CUTTER CASE $\phi 13$	$\phi 13$	TDCT-CASE-F0013 (K910-02-001)
CUTTER CASE $\phi 16$	$\phi 16$	TDCT-CASE-F0016 (K910-02-002)
CUTTER CASE $\phi 8$	$\phi 8$	TDCT-CASE-F0008 (K910-02-003)
CUTTER CASE $\phi 10$	$\phi 10$	TDCT-CASE-F0010

CUTTER



Select the cutter compatible with the tip to be dressed.
Used in the cutter case.



PRODUCT	DESCRIPTION	CODE NO.
CUTTER $\phi 13 \times 6.5R$		TDCT-6.5R-13-0 (K910-03-001)
CUTTER $\phi 16 \times 8R$		TDCT-8R-16-0 (K910-03-003)
CUTTER 20R		TDCT-20R-18-0 (K910-03-004)
CUTTER $\phi 8 \times 4R$		TDCT-4R-08-0 (K910-03-005)

HEAT RESISTANT INSULATION TAPE



Has a heat resistance of 200°C and is coated with adhesive so that it can be easily attached directly to the electrode to handle any workpiece.

PRODUCT	DESCRIPTION	CODE NO.
HEAT RESISTANT INSULATION TAPE	15mm×20m	HRIT-0000000001 (K900-34-001)

SUB COPPER PLATE

Placed on the MYSPOT table to continue producing high quality products.

PRODUCT	DESCRIPTION	CODE NO.
NK-21 t15x800x1000		SBCP-15080100-1 (K012-00-001)
NK-03 t15x1000x1500		SBCP-15100150-1 (K012-00-004)
NK-03 t15x1000x2000		SBCP-15100200-1 (K012-00-005)

SIMPLIFIED TENSILE TESTER



Easy to measure the spot weld strength! The strength is well controlled by numbers.

- Maximum measurement capacity: 30 kN (Measurement range: 2 to 30 kN)
- Its space-saving design allows installation next to a welder.
- Establishment of quality control practices

Model	PT-30 (with data linkage)
Maximum measurement capacity	30 kN (Measurement range: 2 to 30 kN)
Accuracy	±10%
Load Display	Digital display
Clamping system	Vertical clamping (with M10 hexagon socket bolts)
Load method	Manual lever (of hydraulic jack)
Shape of test piece	For JIS3136-compatible single-point test Test piece 30~50mm x 100mm x t0.8~3.2mm / Weld Nut M4~M10
Approx. weight	Machine: 146kg
Approx. dimensions	H 1715 × W 470 × D 550

- 1 Position a test piece.
- 2 Pull it in both directions until its welded surface comes off.
- 3 The shear strength is immediately displayed in kN. Print the results with the print button.



PRODUCT	DESCRIPTION	CODE NO.
SIMPLIFIED TENSILE TESTER	PT30	TSTR-DGP0000007
ROLLED PAPER	-	TSTR-0000000002
INK RIBBON	-	TSTR-0000000003

