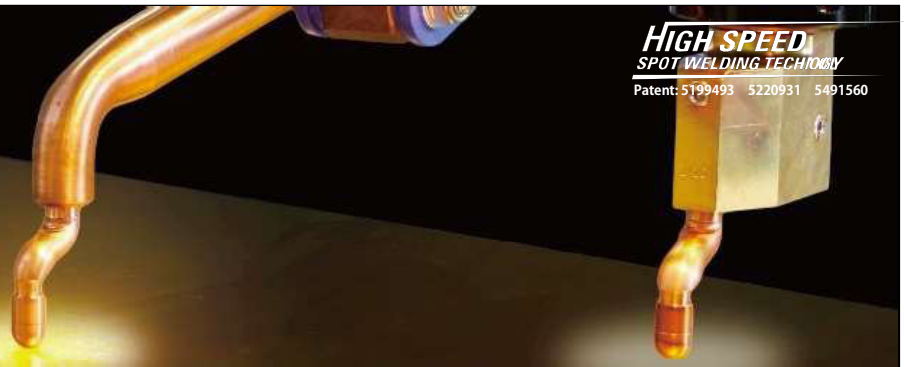


# PEN.T-WKG

## Aluminum+



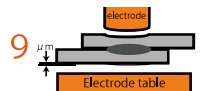
### 1. Clean and Strong

No burn, no distortion



### 2. Minimize protrusions

Eliminate grinder finishing and keep the work environment clean.



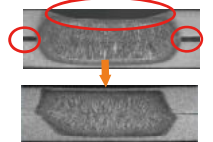
### 3. Suitable for coated materials

By highly-efficient heat generation



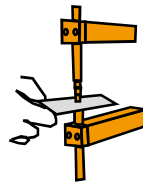
### 4. Eliminate "sheet separation"

Keep the product as flat as possible



### 5. Positioning comes first, then weld

Preventing injuries when spot welding



1. Set your piece.



2. Hold the position by the foot pedal



3. Make sure your welding point



4. Air Pressure starts

#### Specifications **[NK-o8-WKG-EZ]**

Rated Capacity : 80 kVA

Ac380~480V 3φ 50/60Hz

Maximum current : **24000A**

Electrode force : **3.8 kN**

Duty cycle : 7%

Cooling water : 8.5L/min or more (Option)

Electrode tip : φ16 (taper 1/10)

Machine size : W615×D1200×H1800mm

Weight : 550kg

Reference of welding capacity :

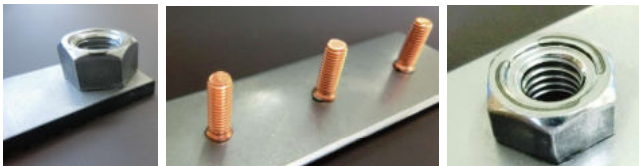
Mild steel (3.2×3.2mm) Stainless (2.5×2.5mm)

Galvanneal steel (3.2×3.2mm)

Galvanized steel (2.3×2.3mm)

### Aluminum (2.0mmx2.0mm)

\*Above mentioned materials are slightly different by manufacturer, or by country in the process of production. Koyo giken inc. warrants the performance of our product MYSPOT, not warrants those materials and thier thickness.



### 6. **EasySetting** selects the optimum parameters.

By entering the "material type" and "thickness".

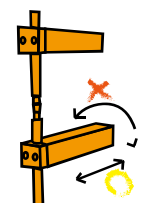


### 7. Horn is square-shaped. Easy to set up!

Easy to adjust. Minimize set-up time



1. One-touch handle



2. Easy to adjust